



**JACK
RABBIT**

FROST PROTECTION

**Better. Smarter.
Frost Protection**

COLD AIR DRAIN

Frost Protection



**Eliminate frost pockets in low lying
areas with a Cold Air Drain**

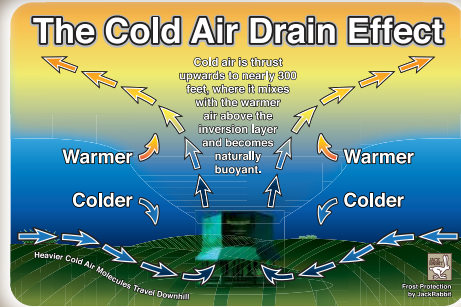


471 Industrial Ave. • Ripon, CA 95366

209.599.6118 • www.jackrabbit.bz



Cold Air Removal System



As the earth cools, it chills the air closest to the ground. Heavy, cold air flows downhill and accumulates in low lying areas. As cold air accumulates, it condenses causing temperatures to reach critical levels resulting in frost damage. Cold Air Drains mitigate frost damage by draining cold air 300 ft. into the upper inversion layer before the temperature drops to damaging levels.

Our powerful Model 3510 Cold Air Drain, drains 200,000 CFM of low lying, frost causing cold air in up to 16 acres.



Model 3510



Model 1550

The popular Model 1550 Cold Air Drain expels cold air at a rate of 105,000 CFM and protects up to 9 acres.

The small, electric powered HotSpotter is designed for smaller applications drains approximately 7,000 CFM of cold air and treats up to 0.25 acres.



HotSpotter



Temperature Sensing Power Units

- Gasoline
- Propane
- Electric

Tractor PTO

- Standard 540 RPM
- PTO shaft included
- Min 35 PTO HP

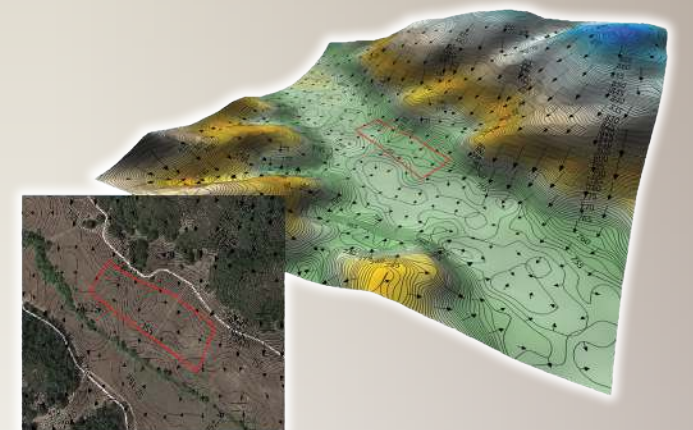


Remote Management

- Monitor temperatures before frost develops
- Alert if machine fails to start
- Control auto start settings

Complimentary Frost Analysis

- Locates cold air accumulation points
- Identifies micro-climates
- Calculates cold air movement





Cold Air Drain

SPECIFICATIONS	MODEL 1550	MODEL 3510	HotSpotter
Size	96" Octagonal at base 116" Octagonal at Skirts 90" tall	130" Octagonal at base 152" Octagonal at skirts 119" tall	34" wide X 29" tall
Weight	Approx. 1,100 lbs.	Approx. 2,160 lbs.	Approx. 80 lbs.
Area Coverage	6-9 acres depending on topog- raphy	10-14 acres depending on topog- raphy	1/4 acre depending on topography
Drain Capacity	105,000 CFM	200,000 CFM	7,000 CFM
Propeller	3-blade balanced aluminum with low-noise tip	4-blade balanced aluminum with low noise-tip	3-blade thermo plastic with cast aluminum hub
Power Unit Options	19 HP Fuel injected Kohler 25 HP Kohler propane 15 HP Nord electric motor	26.5 HP Fuel injected Kohler 25 HP Kohler propane 30 HP Nord electric motor	3/4 HP Electric Motor 115V 1PH 60Hz 8AMP
Fuel Capacity	20 Gallon gasoline EPA/CARB certified tank	20 Gallon gasoline EPA/CARB certified tank	-
Noise Level	63-66 dB depending on power unit	63-66 dB depending on power unit	60-65 dB
Construction	All steel powdercoated panels and parts	All steel powdercoated panels and parts	All steel powdercoated parts
Portability	Integral forklift channels	Integral forklift channels	Two integrated carry handles
Options	Auto-Start power unit Remote greasing	Auto-Start power unit Remote greasing	-
Gearbox	Superior, double shaft 1-1/4" input/output shafts	Superior, double shaft 1-3/4" input/output shafts	Electric motor by North American Electric, Inc.

PRODUCT COMPARISON	COLD AIR DRAIN	WIND MACHINE	TOWABLE HEATERS
Best Suited Areas	Pockets, Slopes, Canyons, Rolling Hills, Swales, Valleys	Flat Ground	Slopes, Flat, Rolling Hills
Unit Cost	\$25,00 - \$32,200 with power unit \$18,000 - \$25,000 w/o power unit	Approx. \$34,000	\$26,700
Auto-Start Option	Yes	Yes	Has to be pulled by tractor
Maintenance Cost	Minimal: Owner maintained	Maintenance contract required	Unknown
Fuel Consumption	1 gal/hr	10 gal/hr	12-24 gal/hr
Horse Power Requirements	19 HP	85-100 HP	65 HP
Power Options	Gas, Electric, Propane, PTO	Gas, Electric, PTO, Diesel, LPG	PTO
Fan Efficiency	90%	56%	Unknown
Propeller	3 blade, Aluminum, Resilient mounted, Vibration Eliminating, Low-Noise Tip	Rigid Mount	N/A
Gearbox	Cast Aluminum, Steel Gears	Cast Iron, Steel Gears	N/A
Layering Frost Protection	Yes, Wind Machines, Sprinklers, Heaters	Yes, Heaters	Yes, can be used for advective too
Noise Level	Approx. 63-66 dB depending on power unit at 120 ft.	Approx. 90 dB at 126 ft.	Approx. 57 dB at 130 ft.
Safe With Wind	Yes	No	Yes
Years In Use	28	50+	16
Manufacturers	Jackrabbit, SiS technologies, Exfrost	Orchard-Rite, Amarillo, Vamco Ltd, HF Hauff/Chinook, Frost Boss	Agrofrost, Splash Direct