

JACK RABBIT

JACKRUNNER 180 Self Propelled Nut Shuttle



The original side-dump shuttle that travels
up to 35 mph in both directions





"BUILT FOR SPEED... BORN TO RUN"

Since the early 1980s Jackrabbit has lead the industry in high-speed nut shuttle systems.

Traveling both directions at speeds up to 35 miles an hour the latest Jackrunner 180 drives backwards down the orchard row where it meets the Wedge 10 reservoir cart on the move. As it engages the Wedge 10, the automatic unload valve is activated and nuts are rapidly conveyed into the Jackrunner 180 without the harvester needing to slow or stop.

Once loaded the operator simply flips a switch to rotate the seat pedestal 180 degrees and begins driving forward out of the orchard to the elevator.

The original side-dump system, permits operators to quickly dump the nuts into the side-dump bin of our best in class high-speed elevators, conveying over 440 cubic feet of material in under 60 seconds!



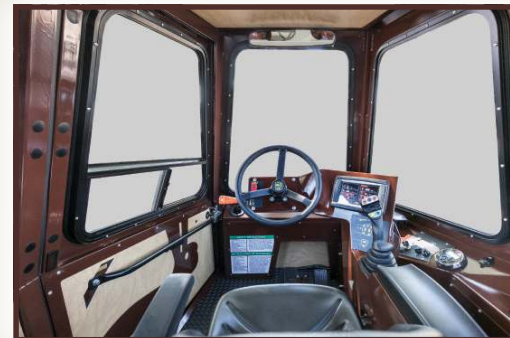
Adjustable air ride seat and powered 180° pedestal rotation



Adjustable front and rear foot pedals for acceleration and braking



Intuitive F-N-R direction control and parking brake



Spacious and ergonomic cab with maximum visibility

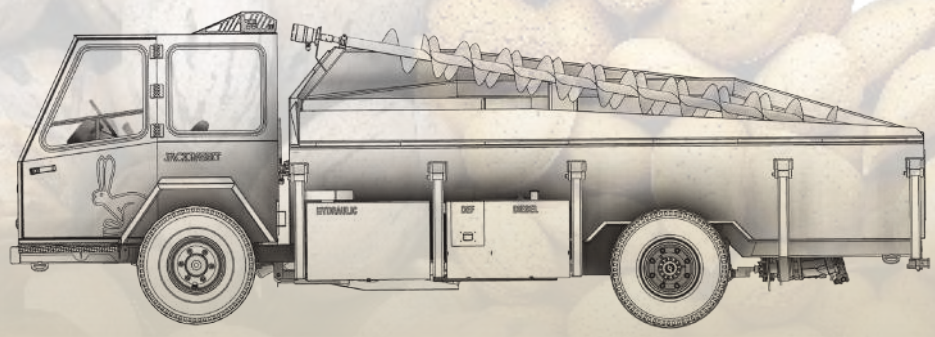
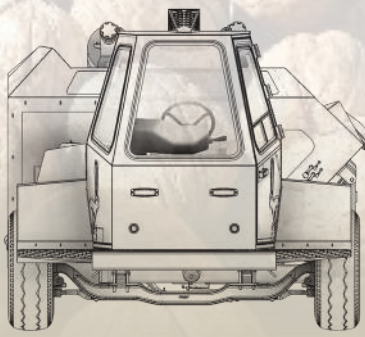


Multi-function joystick and large touchscreen display for comprehensive diagnostics, control settings and load mode



Sleek design with side door entrance and standard 1/2" orchard glass windows throughout





ADDITIONAL FEATURES AND OPTIONS:

- Large distributed A/C system
- Higher bin clearance at elevator
- Rear camera option
- Intuitive load mode
- Reversing engine cooling fan
- UHF radio option
- Integrated trailer braking system
- LED safety stobes
- Rear floatation tire option

SPECIFICATIONS

STANDARD ENGINE	T-4 QSF 3.8 - CM2350 F107 CUMMINS TURBO, 130HP@2,500RPM
SPEED RANGE	0-35 MPH (56 KM/H)
GROSS EMPTY WEIGHT	10,940 LBS (4962 KG)
LOADED WEIGHT DISTRIBUTION	60% REAR, 40% FRONT
BIN CAPACITY	440 CU FT (12.4 CU M)
LENGTH	21FT 10IN (6.6 M)
WIDTH	8FT 1IN (2.5 M)
BIN HEIGHT	FRONT 6FT 3IN (1.9 M), REAR 4FT 7IN (1.4 M)
CAB HEIGHT	7FT 7IN (2.3 M)
WHEEL BASE	11FT 3IN (3.4 M)
DIESEL FUEL TANK CAPACITY	33 US GAL (125 L)
HYDRAULIC OIL TANK CAPACITY	45 US GAL (170 L)
DIESEL EXHAUST FLUID (DEF) TANK CAPACITY	5 US GAL (19 L)
HYDRAULIC SYSTEM	HYDROSTATIC TRANSMISSION WITH OIL COOLER
SEAT POSITION AND TYPE	AIR SUSPENSION W/ 180 DEG ROTATION
PARKING BRAKE	MANUAL ON/OFF, FAIL ON
GROUND DRIVE	HYDROSTATIC TRANSMISSION: AUTO HI-LOW
AXLES	FRONT STEERABLE, REAR FIXED DRIVE POSITION
SUSPENSION	FRONT AND REAR LEAF SPRING
TIRE SIZE (DOMESTIC)	FRONT HWY 16.5IN RIM, REAR HWY 16.5 RIM
TIRE SIZE (INTERNATIONAL)	FRONT HWY 16.5IN RIM, REAR FLOTATION 17.5 RIM